

## TOJA WALL HUNG TOILET



### Features

- Sleek skirted design with concealed trapway for easy cleaning
- Dual flush system
- Wall hung type, easy cleaning

### Specifications

Flush system:	Wash Down
Water Use:	4.5L / 3L
Rough-in:	H=220 mm
Bowl Shape:	Elongated
Water Pressure:	0.05MPa~0.75MPa
Size:	365Wx595Dx351H mm

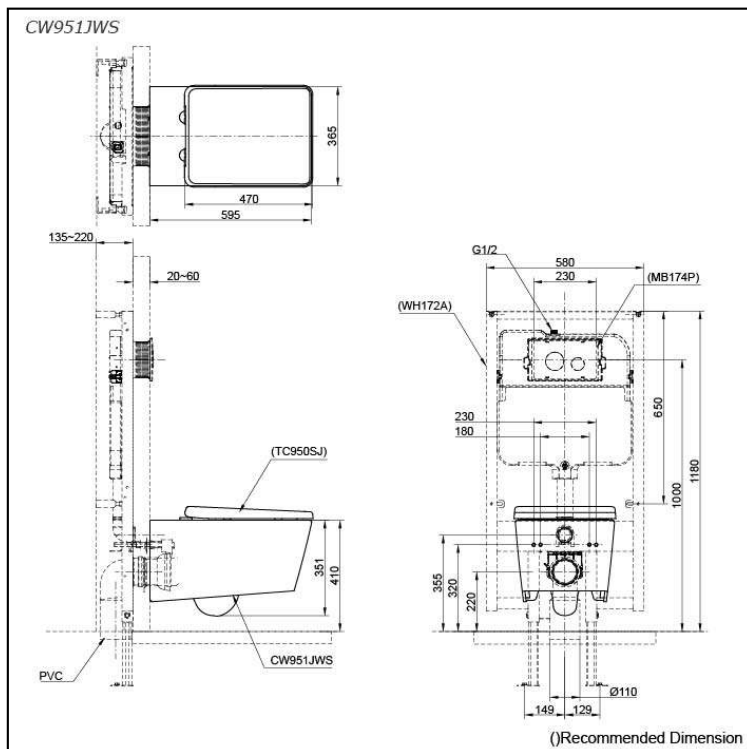
### Parts description

Fittings and Seat & Cover are not included

- **CW951JWS**  
Elongated Wall Hung Closet Bowl (P-Trap)  
(Rough-in 220)

#### Optional Parts

- WH172A  
Concealed Cistern w/Frame
- WH142A  
Concealed Cistern w/Frame  
(Low Type)
- TC950SJ  
Soft Close Seat & Cover (Urea Resin)
- MB174P  
Flush Panel



### Colors

White