

SPECIFICATIONS

T60P Urinal Flush Valve (Straight Pipe) For U57, U57M	T60RN Urinal Flush Valve (Bended Pipe) For U104	T60S Urinal Flush Valve (Bended Pipe) For U370

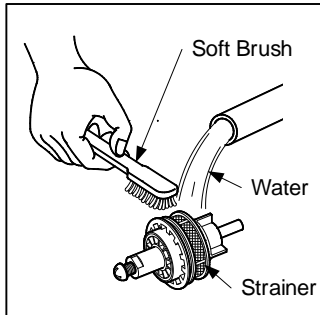
OPERATING CONDITIONS

1. Water supply pressure : 0.07 ~ 0.75 MPa.
2. Ensure that water supply is clean (No Sand, Dirt, Etc.)

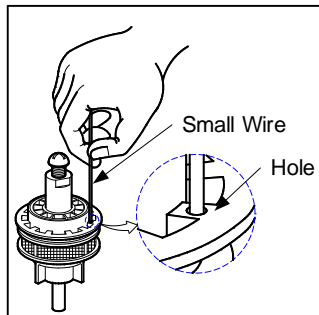
MAINTENANCE

1. All Finishes : Clean the finish with mild soap and warm water. Wipe entire surface completely dry with clean soft cloth. Many cleaners may contain chemicals, such as ammonia, chlorine, toilet cleaner etc. which could adversely affect the finish and are not recommended for cleaning
2. Clean the Piston valve periodically with soft brush and small wire.

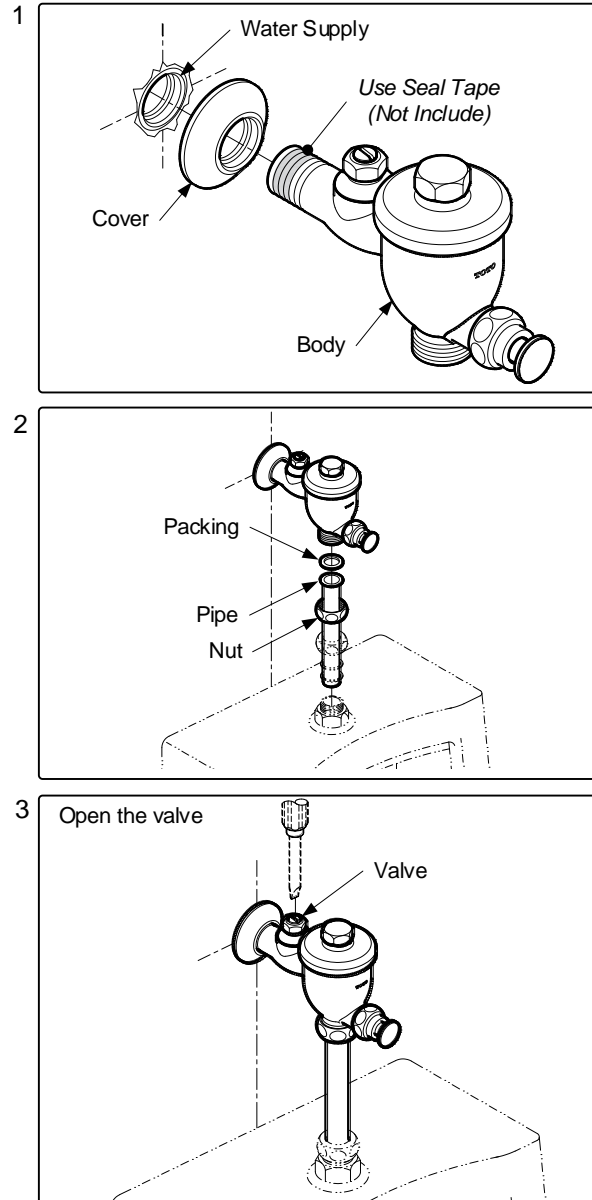
A. STRAINER



B. PISTON VALVE HOLE

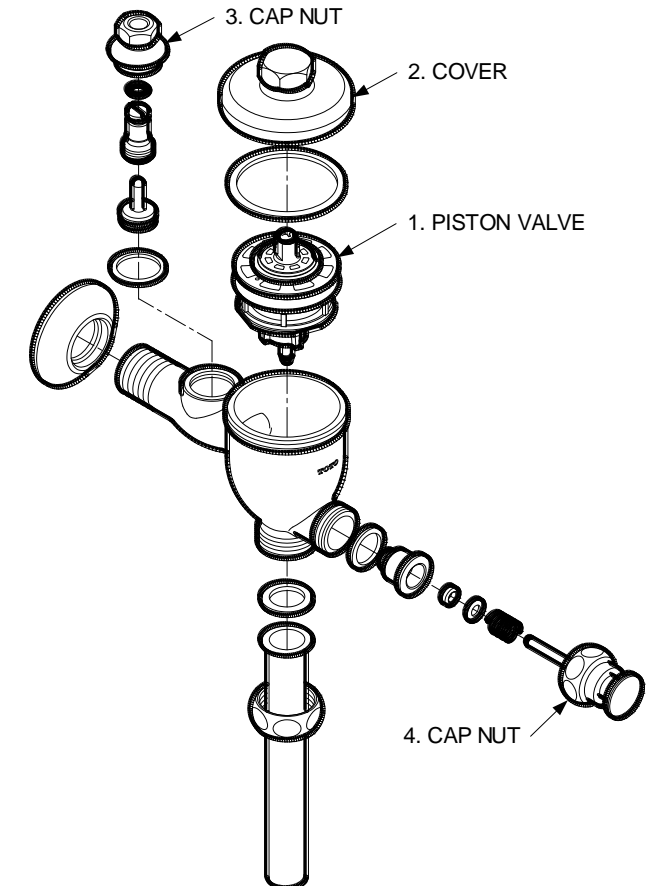


INSTALLATION



TROUBLESHOOTING

PROBLEM	CHECK POINT	SOLUTION
Water continue running	1	Remove and clean
Water leaks around the body	2, 3, 4	Tighten



ATTENTION

1. Don't use abrasive cleaners or solvents on faucets and fittings.
2. As the product model is constantly updated, the actual product may not look the same as it shown in the diagram, but the basic installation principles are the same.

SPESIFIKASI

T60P Urinal Flush Valve (Straight Pipe) For U57, U57M	T60RN Urinal Flush Valve (Bended Pipe) For U104	T60S Urinal Flush Valve (Bended Pipe) For U370

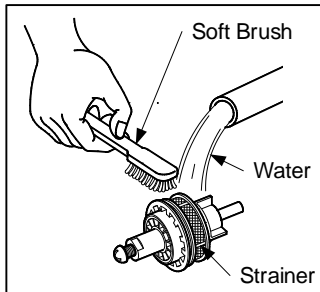
KONDISI OPERASIONAL

1. Tekanan sumber air: 0.05 ~ 0.75 MPa.
2. Pastikan kondisi sumber air adalah bersih (tidak ada pasir, kotoran dan lain lain)

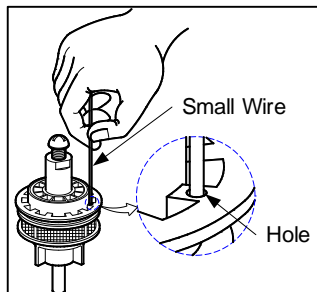
PEMELIHARAAN

1. Seluruh lapisan : Bersihkan lapisan akhir dengan sabun lembut dan air hangat. Lap seluruh permukaan hingga benar-benar kering dengan kain lembut yang bersih. Kebanyakan bahan pembersih mungkin mengandung bahan kimia, seperti amonia, klorin, pembersih toilet, dll. yang dapat mempengaruhi hasil akhir dan tidak disarankan untuk membersihkannya
2. Bersihkan Piston valve secara berkala dengan sikat lembut dan kawat kecil.

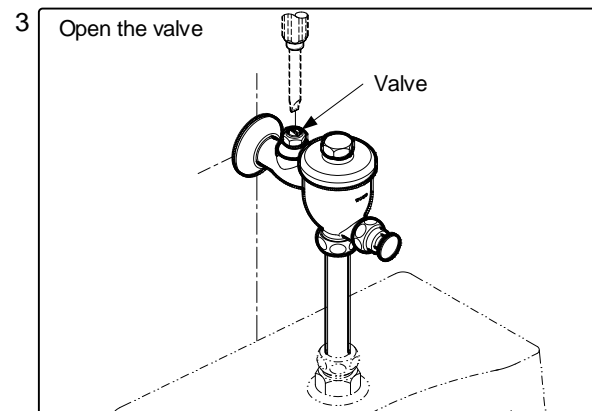
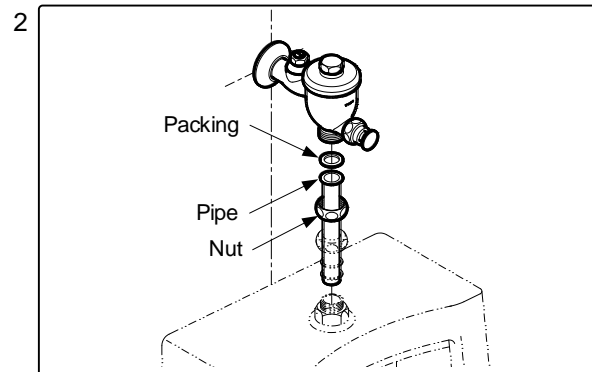
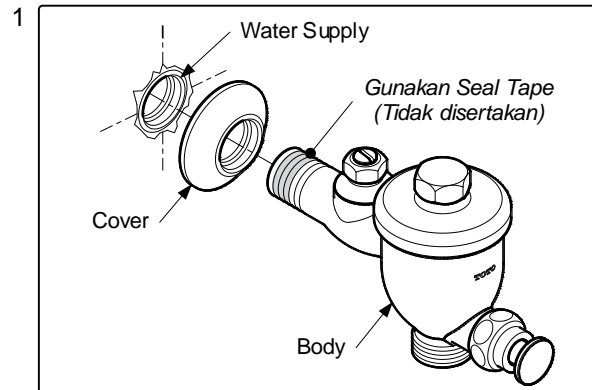
A. STRAINER



B. PISTON VALVE HOLE

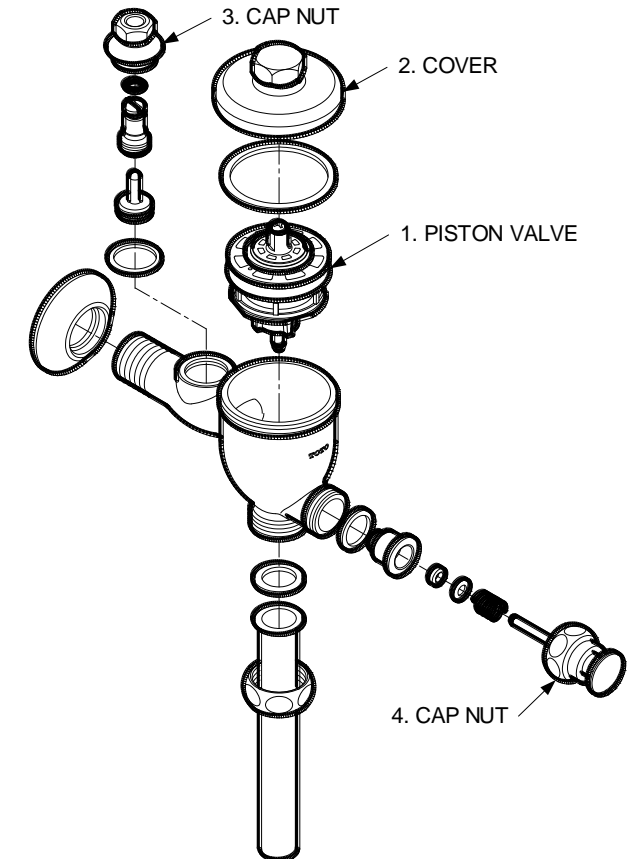


PEMASANGAN



PENYELESAIAN MASALAH

MASALAH	POIN PERIKSA	SOLUSI
Air terus mengalir	1	Lepas dan bersihkan
Air bocor disekitar bodi	2, 3, 4	Kencangkan



PERHATIAN

1. Jangan gunakan pembersih atau pelarut abrasif pada faucet dan fitting.
2. Karena model produk terus mengalami pembaharuan, aktual produk mungkin tidak sama dengan gambar, tapi prinsip dasar pemasangan adalah sama.