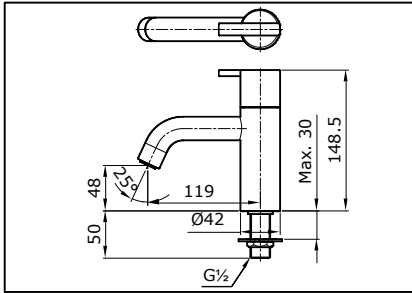


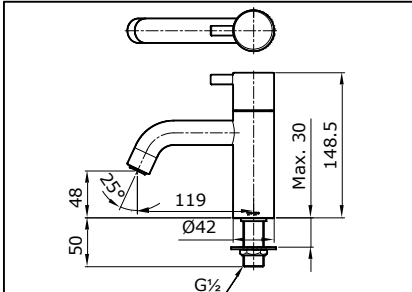
TOTO "EGO" LAVATORY FAUCET (COLD ONLY) TX122LE

SPECIFICATIONS



TX 122 LEZ

"EGO" Lavatory Faucet (Cold Only)



TX 122 LESN

"EGOII" Lavatory Faucet (Cold Only)

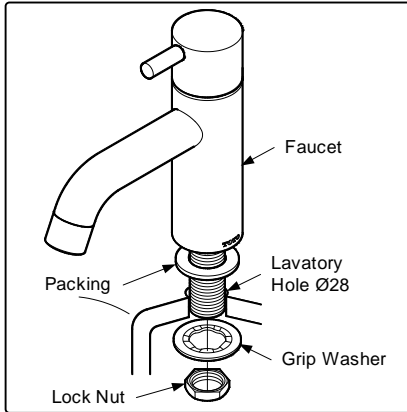
OPERATING CONDITIONS

1. Water supply pressure : 0.05 ~ 0.75 MPa.
2. Ensure that water supply is clean (No Sand, Dirt, Etc.).

ATTENTION

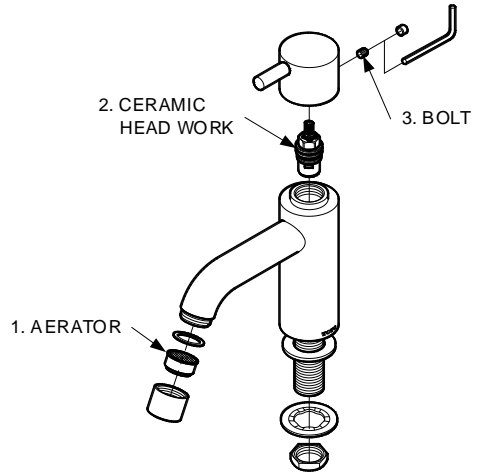
1. Don't use abrasive cleaning material such as; detergents containing hydrochloric acids, thinner, polishing powder, and nylon brush.
2. As the product model is constantly updated, the actual product may not look the same as it shown in the diagram, but the basic installation principles are the same.

INSTALLATION



TROUBLESHOOTING

PROBLEM	CHECK POINT	SOLUTION
Flow rate unsatisfactory	1	Remove & clean
Water leaks around the handle	2	Tighten
Handle is loose	3	Tighten



MAINTENANCE

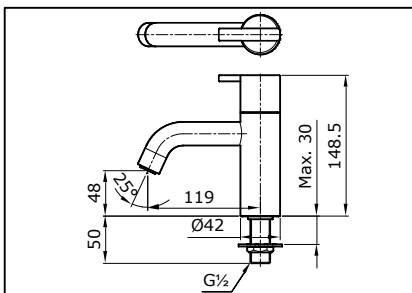
Always wipe plated area with dry soft cloth, and sometimes wipe it with cloth soaked in mild soap.

S06196NN

R8

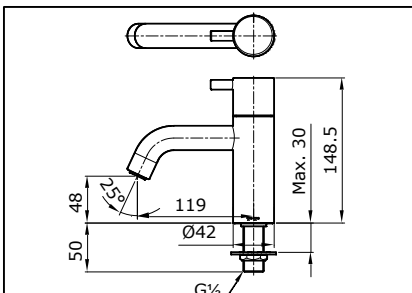
TOTO "EGO" LAVATORY FAUCET (COLD ONLY) TX122LE

SPECIFICATIONS



TX 122 LEZ

"EGO" Lavatory Faucet (Cold Only)



TX 122 LESN

"EGOII" Lavatory Faucet (Cold Only)

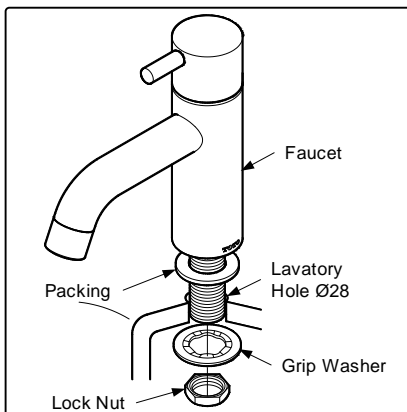
OPERATING CONDITIONS

1. Water supply pressure : 0.05 ~ 0.75 MPa.
2. Ensure that water supply is clean (No Sand, Dirt, Etc.).

ATTENTION

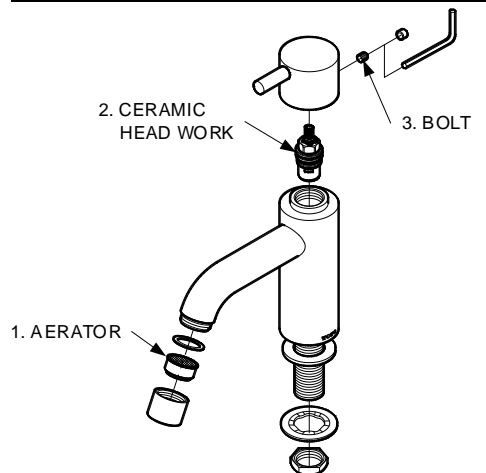
1. Don't use abrasive cleaning material such as; detergents containing hydrochloric acids, thinner, polishing powder, and nylon brush.
2. As the product model is constantly updated, the actual product may not look the same as it shown in the diagram, but the basic installation principles are the same.

INSTALLATION



TROUBLESHOOTING

PROBLEM	CHECK POINT	SOLUTION
Flow rate unsatisfactory	1	Remove & clean
Water leaks around the handle	2	Tighten
Handle is loose	3	Tighten



MAINTENANCE

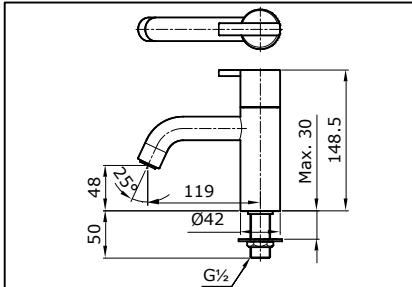
Always wipe plated area with dry soft cloth, and sometimes wipe it with cloth soaked in mild soap.

S06196NN

R8

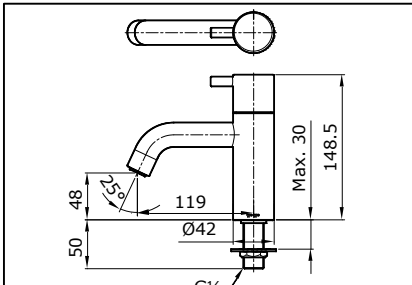
TOTO "EGO" LAVATORY FAUCET (COLD ONLY) TX122LE

SPESIFIKASI



TX 122 LEZ

"EGO" Lavatory Faucet (Cold Only)



TX 122 LESN

"EGOII" Lavatory Faucet (Cold Only)

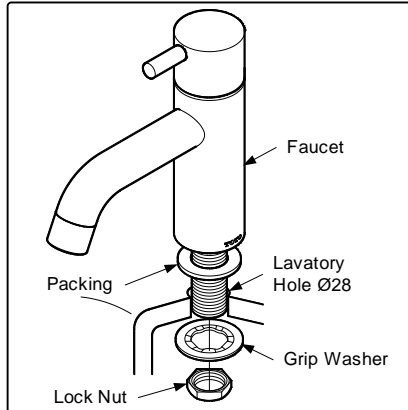
KONDISI OPERASIONAL

1. Tekanan sumber air: 0.05 ~ 0.75 MPa.
2. Pastikan kondisi sumber air adalah bersih (tidak ada pasir, kotoran dan lain lain)

PERHATIAN

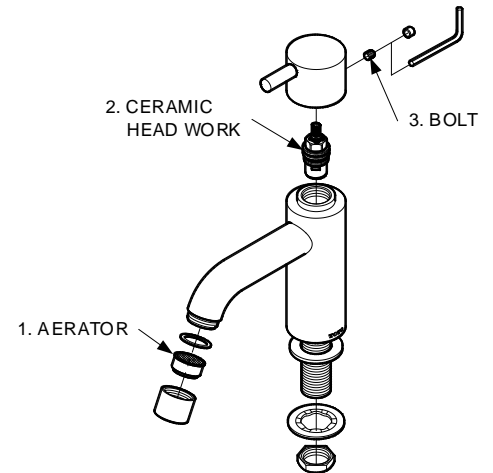
1. Jangan gunakan bahan pembersih yang bersifat abrasif seperti deterjen yang mengandung asam klorida, tinner, bubuk polishing dan sikat nilon.
2. Karena model produk terus mengalami pembaruan, aktual produk mungkin tidak sama dengan gambar, tapi prinsip dasar pemasangan adalah sama.

PEMASANGAN



PENYELESAIAN MASALAH

MASALAH	POIN PERIKSA	SOLUSI
Laju aliran tidak memuaskan	1	Lepas & bersihkan
Air bocor disekitar handle	2	Kencangkan
Handle longgar	3	Kencangkan



PEMELIHARAAN

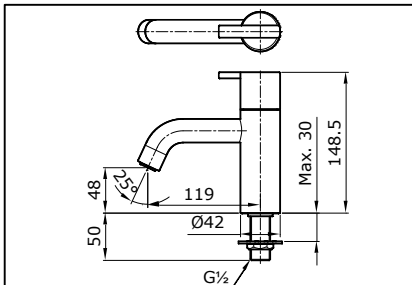
Selalu bersihkan area yang bertapis dengan kain lembut kering, dan sesekali bersihkan dengan kain yang direndam dalam sabun yang dicampur air.

S06196NN

R8

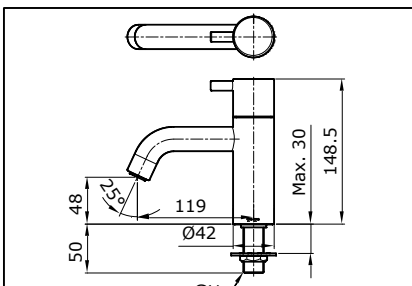
TOTO "EGO" LAVATORY FAUCET (COLD ONLY) TX122LE

SPESIFIKASI



TX 122 LEZ

"EGO" Lavatory Faucet (Cold Only)



TX 122 LESN

"EGOII" Lavatory Faucet (Cold Only)

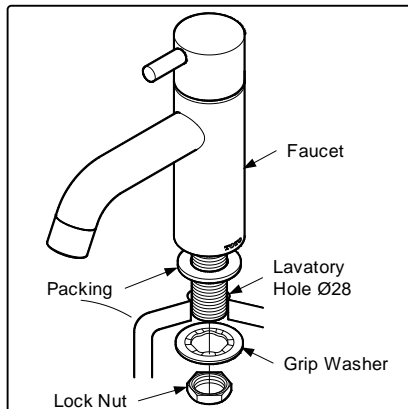
KONDISI OPERASIONAL

1. Tekanan sumber air: 0.05 ~ 0.75 MPa.
2. Pastikan kondisi sumber air adalah bersih (tidak ada pasir, kotoran dan lain lain)

PERHATIAN

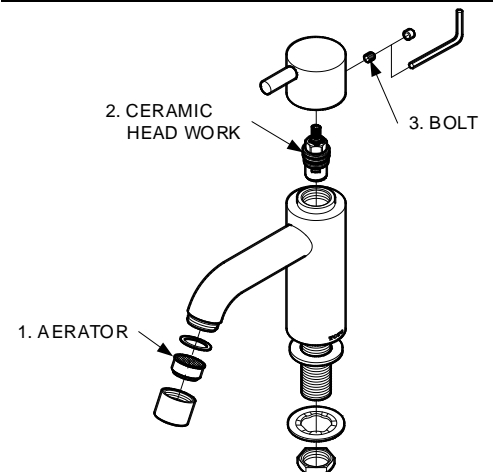
1. Jangan gunakan bahan pembersih yang bersifat abrasif seperti deterjen yang mengandung asam klorida, tinner, bubuk polishing dan sikat nilon.
2. Karena model produk terus mengalami pembaruan, aktual produk mungkin tidak sama dengan gambar, tapi prinsip dasar pemasangan adalah sama.

PEMASANGAN



PENYELESAIAN MASALAH

MASALAH	POIN PERIKSA	SOLUSI
Laju aliran tidak memuaskan	1	Lepas & bersihkan
Air bocor disekitar handle	2	Kencangkan
Handle longgar	3	Kencangkan



PEMELIHARAAN

Selalu bersihkan area yang bertapis dengan kain lembut kering, dan sesekali bersihkan dengan kain yang direndam dalam sabun yang dicampur air.

S06196NN

R8