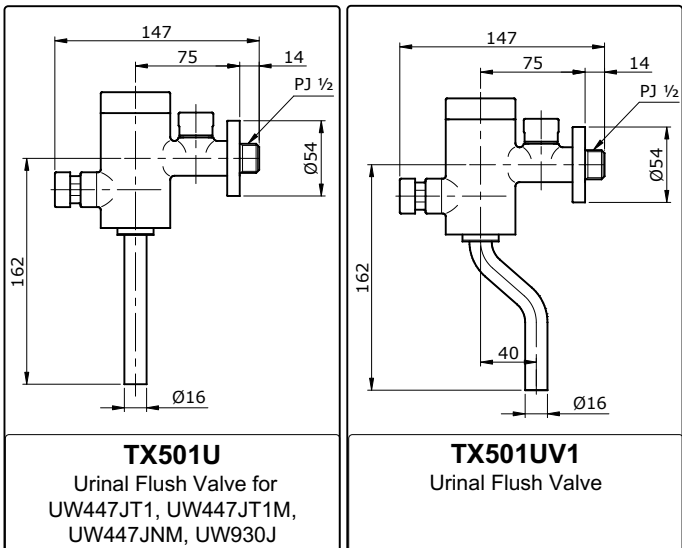


SPECIFICATIONS



TX501U

Urinal Flush Valve for
UW447JT1, UW447JT1M,
UW447JNM, UW930J

TX501UV1

Urinal Flush Valve

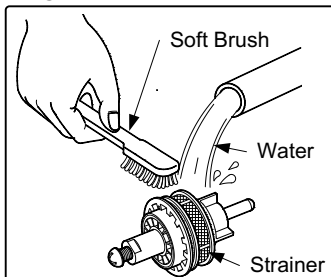
OPERATING CONDITIONS

1. Water supply pressure : 0.07 ~ 0.75 MPa.
2. Ensure that water supply is clean (No Sand, Dirt, Etc.).

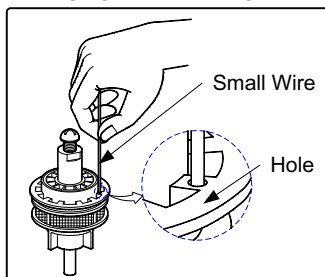
MAINTENANCE

1. Always wipe chrome plated area with dry soft cloth, and sometimes wipe it with cloth soaked in mild soap.
2. Clean the Piston valve periodically with soft brush and small wire.

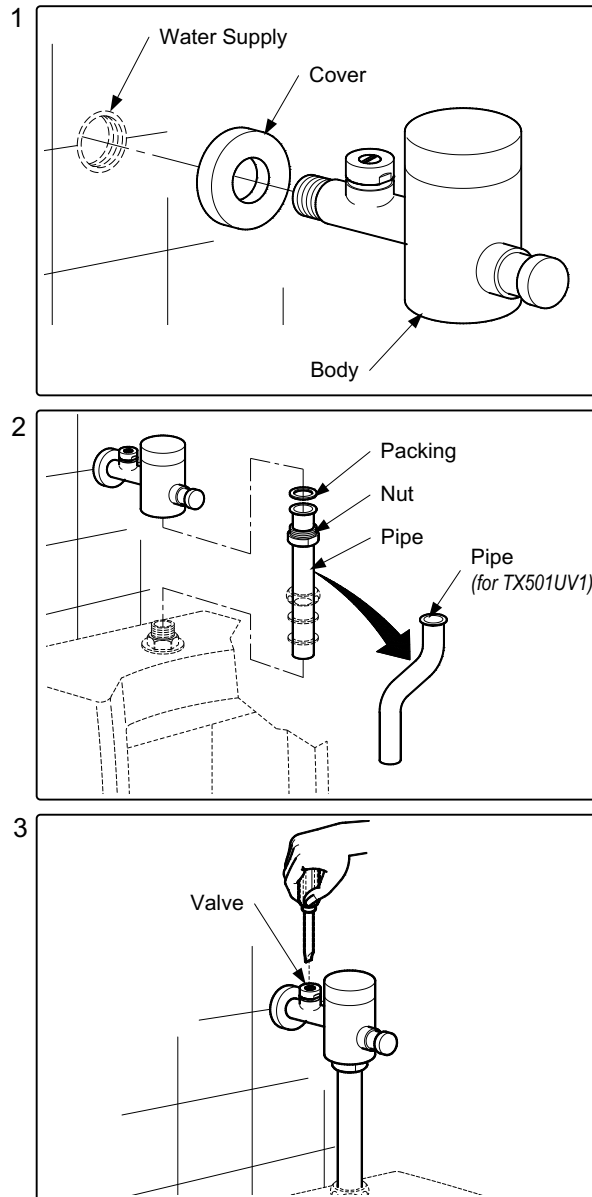
A. STRAINER



B. PISTON VALVE HOLE

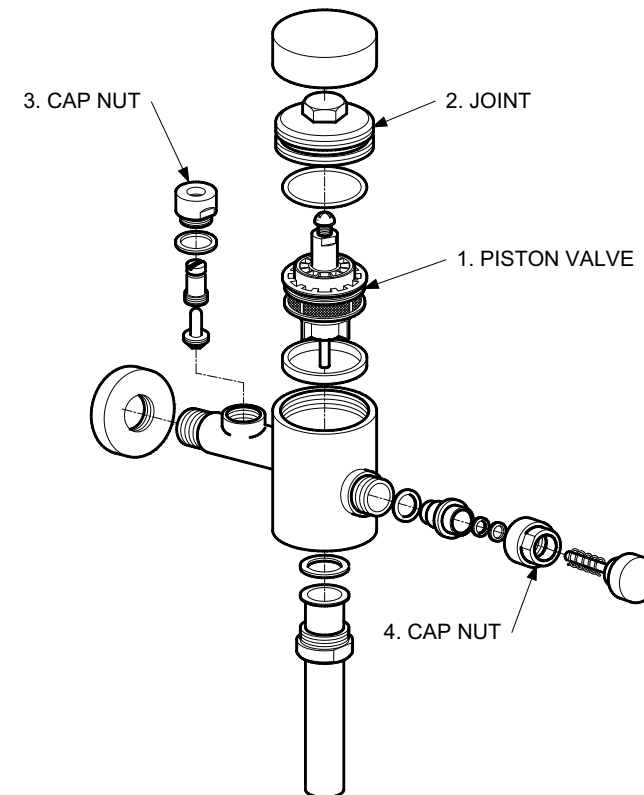


INSTALLATION



TROUBLESHOOTING

PROBLEM	CHECK POINT	SOLUTION
Flow rate unsatisfactory	1	Remove and clean
Water continue running	1	Remove and clean
Water leaks around the body	2, 3, 4	Tighten



ATTENTION

Use of abrasive cleaning material such as; detergents containing hydrochloric acids, thinner, polishing powder, and nylon brush is not recommended