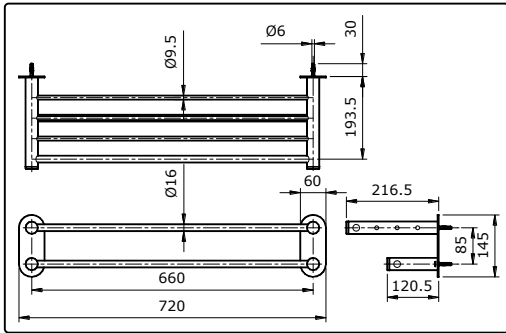


TOTO

"EGO" COMBINATION TOWEL SHELF & TOWEL BAR (L=660mm) TX726AE

SPECIFICATIONS



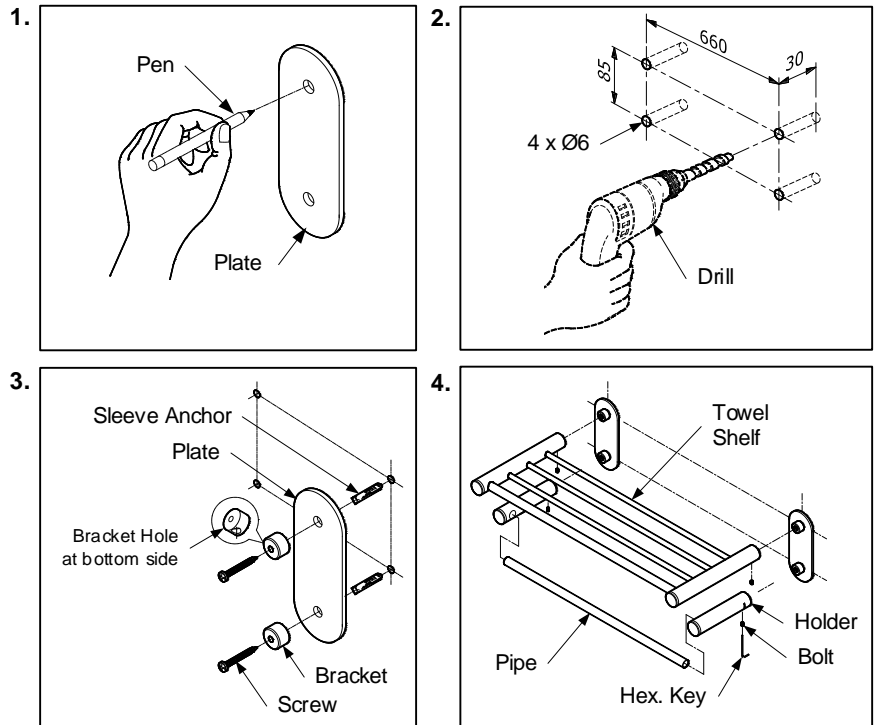
MAINTENANCE

Always wipe chrome plated area with dry soft cloth, and sometimes wipe it with cloth soaked in mild soap.

ATTENTION

1. Don't use abrasive cleaning material such as; detergents containing hydrochloric acids, thinner, polishing powder, and nylon brush.
2. As the product model is constantly updated, the actual product may not look the same as it shown in the diagram, but the basic installation principles are the same.

INSTALLATION

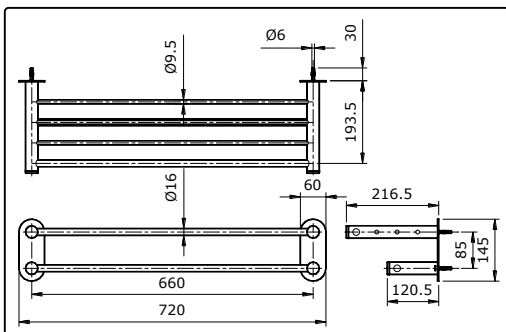


R5

TOTO

"EGO" COMBINATION TOWEL SHELF & TOWEL BAR (L=660mm) TX726AE

SPECIFICATIONS



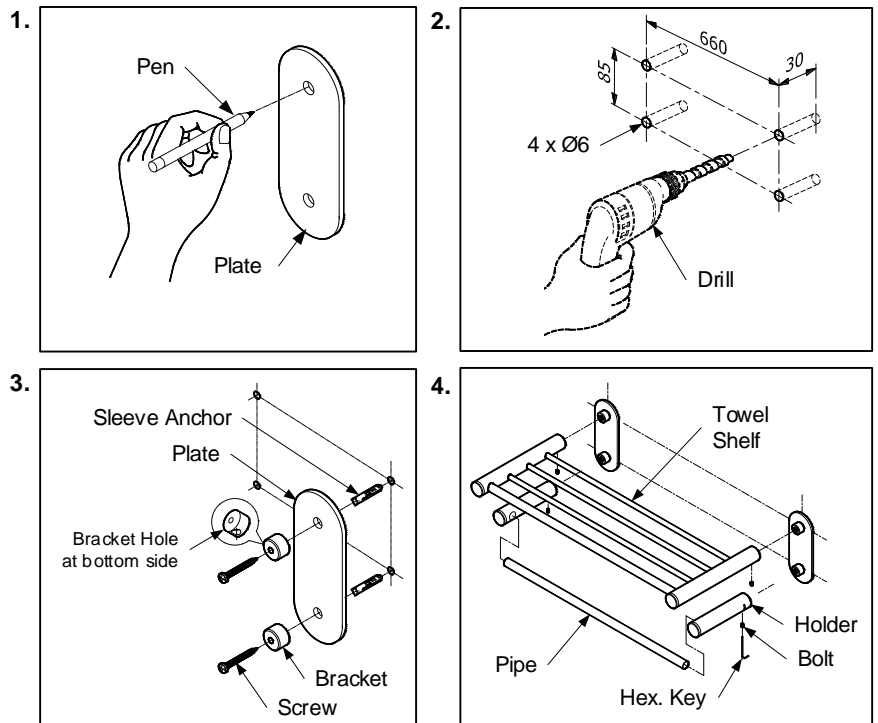
MAINTENANCE

Always wipe chrome plated area with dry soft cloth, and sometimes wipe it with cloth soaked in mild soap.

ATTENTION

1. Don't use abrasive cleaning material such as; detergents containing hydrochloric acids, thinner, polishing powder, and nylon brush.
2. As the product model is constantly updated, the actual product may not look the same as it shown in the diagram, but the basic installation principles are the same.

INSTALLATION

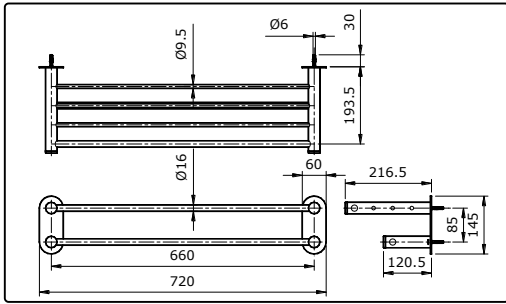


R5

TOTO

"EGO" COMBINATION TOWEL SHELF & TOWEL BAR (L=660mm) TX726AE

SPESIFIKASI



PEMELIHARAAN

Selalu bersihkan area yang berlapis dengan kain lembut kering, dan sesekali bersihkan dengan kain yang direndam dalam sabun yang dicampur air.

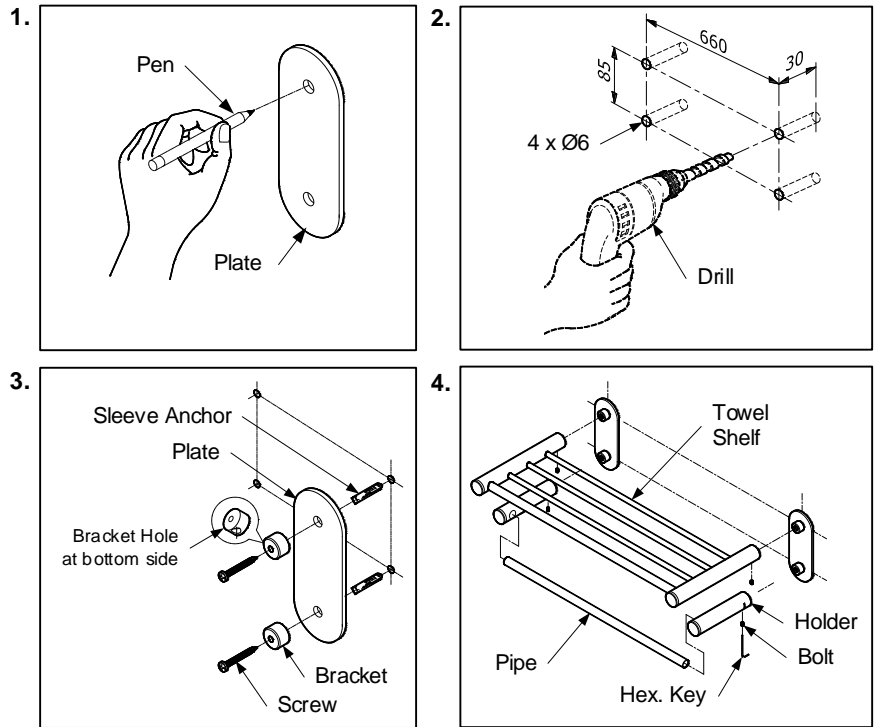
PERHATIAN

1. Jangan gunakan bahan pembersih yang bersifat abrasif seperti deterjen yang mengandung asam klorida, tinner, bubuk polishing dan sikat nilon.
2. Karena model produk terus mengalami pembaharuan, aktual produk mungkin tidak sama dengan gambar, tapi prinsip dasar pemasangan adalah sama.

S06195Z

R5

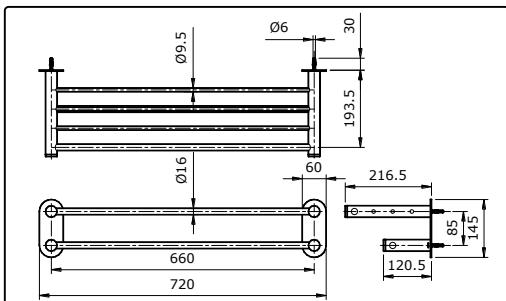
PEMASANGAN



TOTO

"EGO" COMBINATION TOWEL SHELF & TOWEL BAR (L=660mm) TX726AE

SPESIFIKASI



PEMELIHARAAN

Selalu bersihkan area yang berlapis dengan kain lembut kering, dan sesekali bersihkan dengan kain yang direndam dalam sabun yang dicampur air.

PERHATIAN

1. Jangan gunakan bahan pembersih yang bersifat abrasif seperti deterjen yang mengandung asam klorida, tinner, bubuk polishing dan sikat nilon.
2. Karena model produk terus mengalami pembaharuan, aktual produk mungkin tidak sama dengan gambar, tapi prinsip dasar pemasangan adalah sama.

S06195Z

R5

PEMASANGAN

