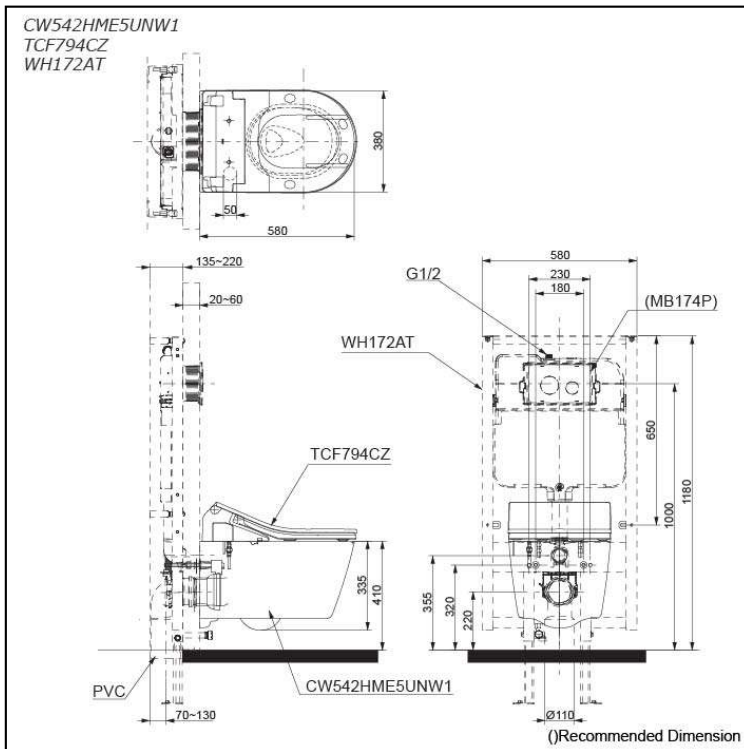


WALL HUNG TOILET with
WASHLET RX



Features

- CEFIONTECT Technology: super smooth, ion barrier glazing for a clean toilet bowl
- TORNADO FLUSH for powerful flushing with less amount of water
- RIMLESS DESIGN bowl ensures easy cleaning and ultimate hygiene
- EWATER+ keeps nozzle clean with sanitizing effect against bacteria
- Fully equipped with rear, front and oscillating & pulsating cleansing function
- Temperature control HEATED SEAT
- PREMIST a fine spray of mist making it difficult for dirt to adhere
- Soft closing seat and cover

EWATER+ is made from tap water by electrolyzed chloride ion. After use, it returns back to ordinary state of water

Specifications

BOWL:

- Flush System: TORNADO FLUSH
- Water Use: 4.5L / 3L
- Rough-in: H=220
- Bowl Shape: D-Shape
- Water Pressure: 0.05MPa~0.75MPa
- Size: 380W x 580D x 335H mm

WASHLET:

- Power Rating: 220~240V , 50/60Hz , 826~837W
- Length of Power Cord: 0.9 m
- Size: 383W x 579D x 146H mm

Parts description

Stop Valve is included.

- **CW542HME5UNW1**
D-Shape Wall Hung Closet Bowl (P-Trap) with Concealed feature, hiding all wiring inside the bowl
- **TCF794CZ**
Concealed WASHLET RX
- **WH172AT**
Concealed Tank (4.5L / 3L)

Optional Parts

- MB174P
Flush Panel

NOTE

- **DO NOT COUPLE THIS WC WITH FLUSH VALVE**

Colors

White