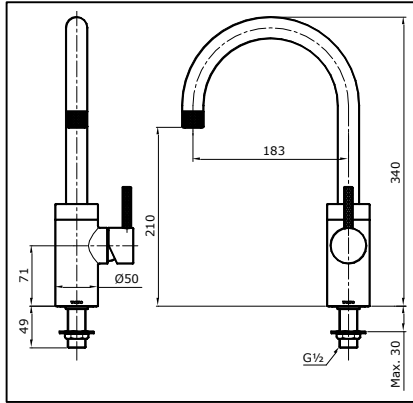


TOTO

"EGO II" "SPECIAL EDITION SPIRAL SPRAY" TX109LEM SINGLE LEVER LAVATORY FAUCET (COLD ONLY)

SPECIFICATIONS



OPERATING CONDITIONS

1. Water supply pressure : 0.05 ~ 0.75 MPa.
2. Ensure that water supply is clean (No Sand, Dirt, Etc.).

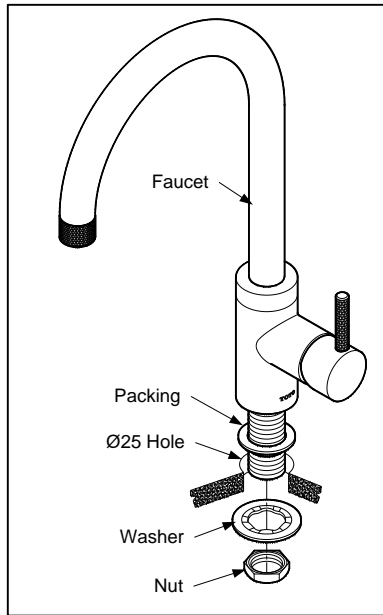
ATTENTION

1. Don't use abrasive cleaning material such as; detergents containing hydrochloric acids, thinner, polishing powder, and nylon brush.
2. As the product model is constantly updated, the actual product may not look the same as it shown in the diagram, but the basic installation principles are the same.

MAINTENANCE

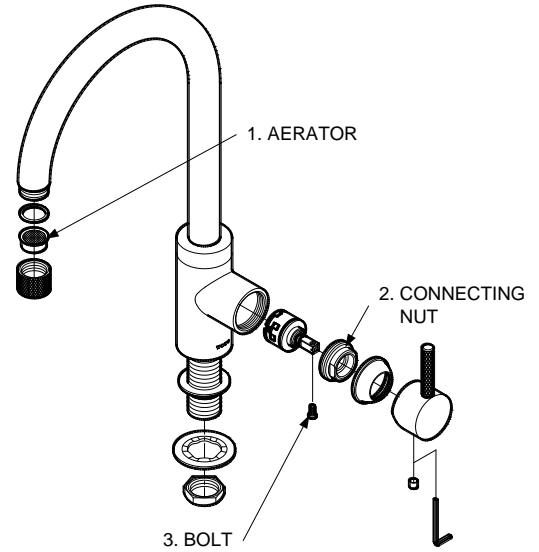
Always wipe chrome plated area with dry soft cloth, and sometimes wipe it with cloth soaked in mild soap.

INSTALLATION



TROUBLESHOOTING

PROBLEM	CHECK POINT	SOLUTION
Flow rate unsatisfactory	1	Remove and clean
Water leaks around the body	2	Tighten
Handle is loose	3	Tighten



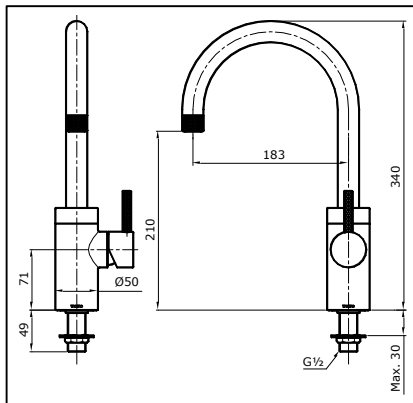
S060376R

R3

TOTO

"EGO II" "SPECIAL EDITION SPIRAL SPRAY" TX109LEM SINGLE LEVER LAVATORY FAUCET (COLD ONLY)

SPECIFICATIONS



OPERATING CONDITIONS

1. Water supply pressure : 0.05 ~ 0.75 MPa.
2. Ensure that water supply is clean (No Sand, Dirt, Etc.).

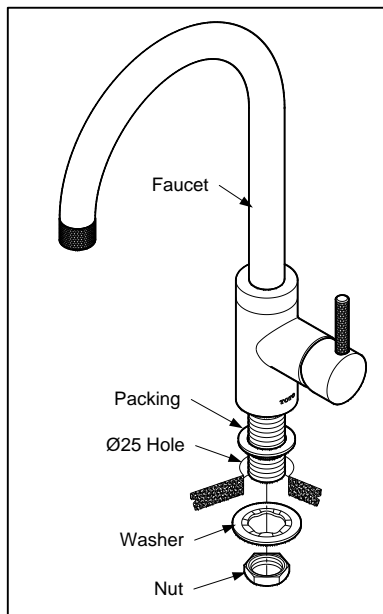
ATTENTION

1. Don't use abrasive cleaning material such as; detergents containing hydrochloric acids, thinner, polishing powder, and nylon brush.
2. As the product model is constantly updated, the actual product may not look the same as it shown in the diagram, but the basic installation principles are the same.

MAINTENANCE

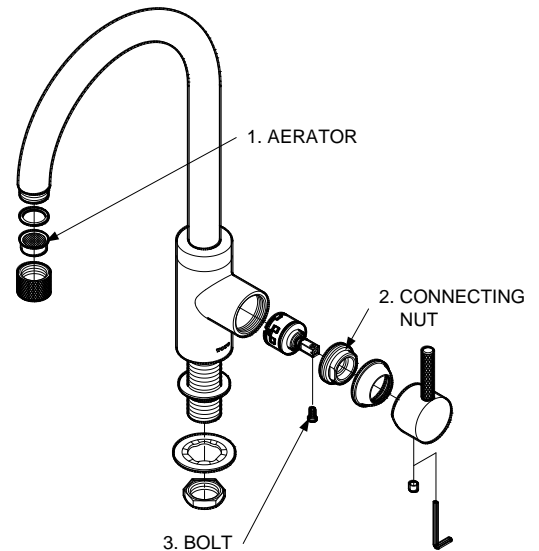
Always wipe chrome plated area with dry soft cloth, and sometimes wipe it with cloth soaked in mild soap.

INSTALLATION



TROUBLESHOOTING

PROBLEM	CHECK POINT	SOLUTION
Flow rate unsatisfactory	1	Remove and clean
Water leaks around the body	2	Tighten
Handle is loose	3	Tighten



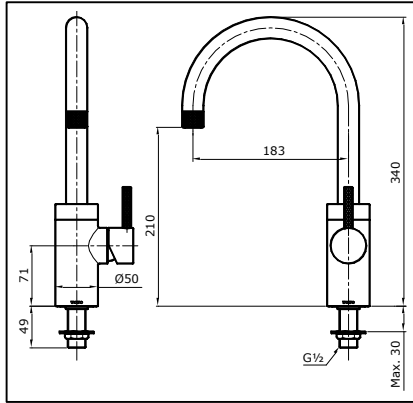
S060376R

R3

TOTO

"EGO II" "SPECIAL EDITION SPIRAL SPRAY" TX109LEM SINGLE LEVER LAVATORY FAUCET (COLD ONLY)

SPESIFIKASI



KONDISI OPERASIONAL

1. Tekanan sumber air: 0.07 ~ 0.75 MPa.
2. Pastikan kondisi sumber air adalah bersih (tidak ada pasir, kotoran dan lain lain)

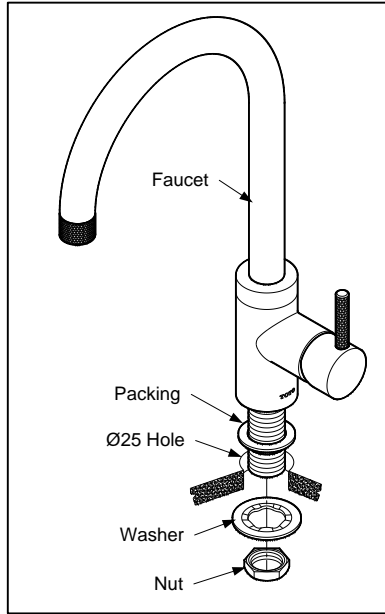
PERHATIAN

1. Jangan gunakan bahan pembersih yang bersifat abrasif seperti deterjen yang mengandung asam klorida, tinner, bubuk polishing dan sikat nilon.
2. Karena model produk terus mengalami pembaharuan, aktual produk mungkin tidak sama dengan gambar, tapi prinsip dasar pemasangan adalah sama.

PEMELIHARAAN

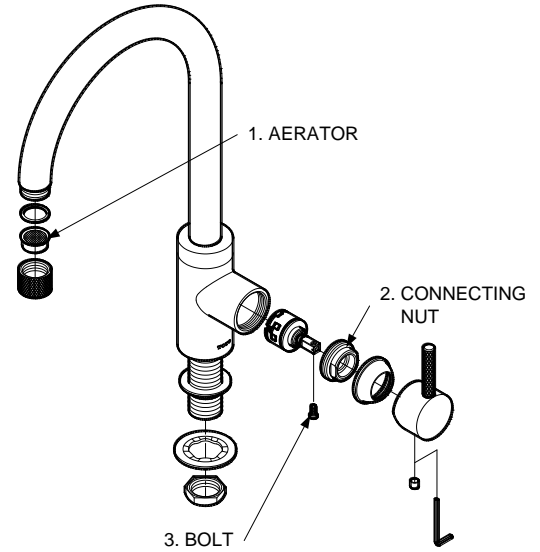
Selalu bersihkan area berlapis krom dengan kain lembut kering, dan sesekali bersihkan dengan kain yang direndam dalam sabun yang dicampur air.

PEMASANGAN



PENYELESAIAN MASALAH

MASALAH	POIN PERIKSA	SOLUSI
Laju aliran tidak memuaskan	1	Lepas & bersihkan
Air bocor disekitar bodi	2	Kencangkan
Handle longgar	3	Kencangkan



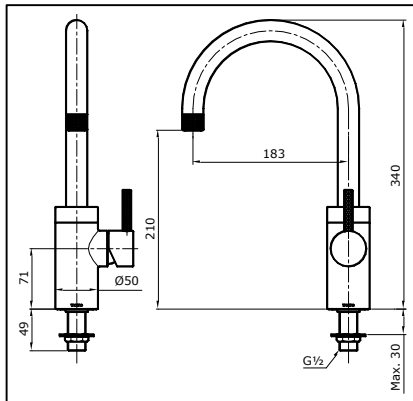
S060376R

R3

TOTO

"EGO II" "SPECIAL EDITION SPIRAL SPRAY" TX109LEM SINGLE LEVER LAVATORY FAUCET (COLD ONLY)

SPESIFIKASI



KONDISI OPERASIONAL

1. Tekanan sumber air: 0.07 ~ 0.75 MPa.
2. Pastikan kondisi sumber air adalah bersih (tidak ada pasir, kotoran dan lain lain)

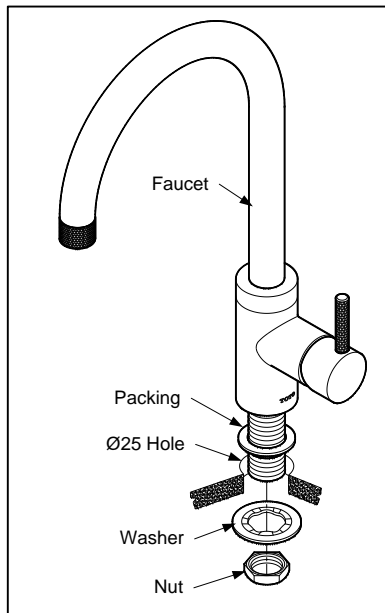
PERHATIAN

1. Jangan gunakan bahan pembersih yang bersifat abrasif seperti deterjen yang mengandung asam klorida, tinner, bubuk polishing dan sikat nilon.
2. Karena model produk terus mengalami pembaharuan, aktual produk mungkin tidak sama dengan gambar, tapi prinsip dasar pemasangan adalah sama.

PEMELIHARAAN

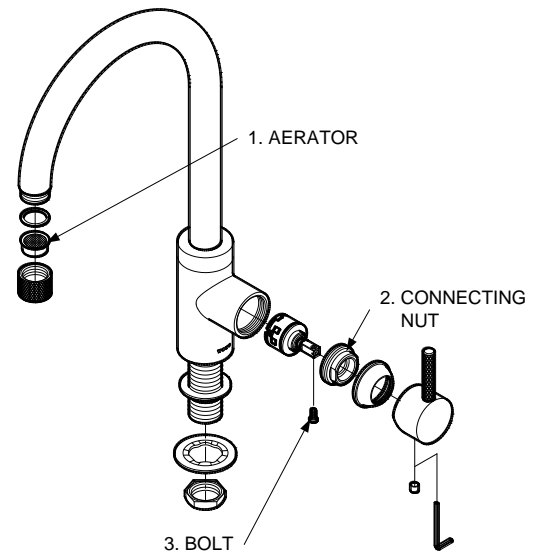
Selalu bersihkan area berlapis krom dengan kain lembut kering, dan sesekali bersihkan dengan kain yang direndam dalam sabun yang dicampur air.

PEMASANGAN



PENYELESAIAN MASALAH

MASALAH	POIN PERIKSA	SOLUSI
Laju aliran tidak memuaskan	1	Lepas & bersihkan
Air bocor disekitar bodi	2	Kencangkan
Handle longgar	3	Kencangkan



S060376R

R3